



Crystal Enterprises Ltd

www.cheshireluxurypools.co.uk

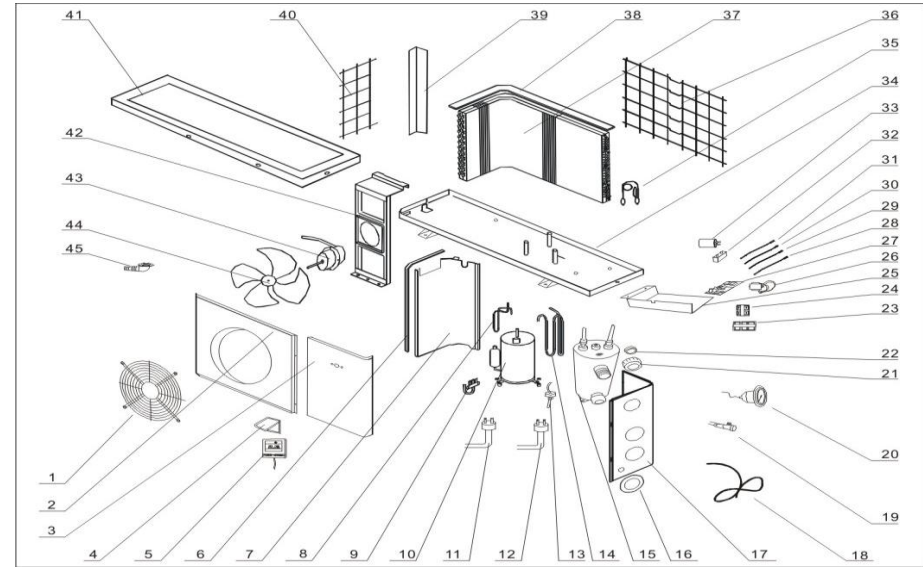
www.purepool.co.uk

Company No. 7590185

Crystal Enterprises Heat Pump Spare Parts
VAT Reg. No. GB934246425

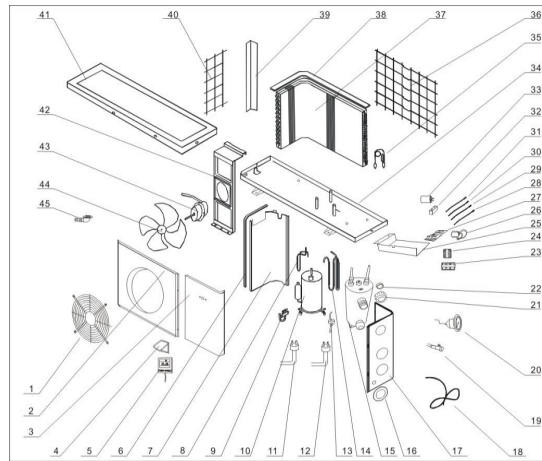
35HS-A SPARE PARTS

No.	UNIT MODEL	In Stock	RRP
1	Fan protection net	No	7.80
2	Front panel 1	No	13.00
3	Front panel 2	No	13.00
4	Control panel cover	Yes	15.00
5	Wire controller	Yes	49.00
6	Verge board polyfoam	No	2.60
7	Verge board	No	7.80
8	Exhaust pipe	Yes	7.80
9	Four way valve	Yes	24.99
10	Compressor	Yes	215.80
11	High pressure interruptor	Yes	7.99
12	Low pressure interruptor	Yes	7.99
13	Water flow switch	Yes	15.00
14	Gas retuning pipe	Yes	10.40
15	Titanium heat exchanger	Yes	192.40
16	Rubber water fender	Yes	2.99
17	Right size board	No	13.00
18	Power cord	No	5.20
19	Refrigerant charge valve	Yes	7.99
20	Pressure manometer	Yes	24.99
21	Fast connection	Yes	5.99
22	Gasket	Yes	2.99
23	Terminal	Yes	2.60
24	Public terminal	Yes	2.60
25	Electrical box	Yes	2.60
26	Transformer	Yes	7.99
27	Circuit Board	Yes	75.00
28	Copper sensor	Yes	5.99
29	Water sensor	Yes	5.99
30	Ambient sensor	Yes	5.99
31	Compressor sensor	Yes	5.99
32	Motor capacitor	Yes	2.99
33	Compressor capacitor	Yes	12.00
34	Frame	No	20.80
35	Capillary	Yes	5.20
36	Reat net	No	5.20
37	Condenser	No	70.20
38	Condenser top polyfoam	No	2.60
39	Left carriage	No	5.20
40	Left net	No	5.20
41	Top cover	No	10.40
42	Motor bracket	No	10.40
43	Fan motor	Yes	28.60
44	Fan	Yes	24.99
45	Drain tube	Yes	2.99
50	Anti-Vibrating Studs (set of 4)	Yes	19.95
51	Wire Controller extention cable (5m) requires added Control panel cover (acts as blank cover).	Yes	12.99
52	Wire Controller extention cable (50m) requires added Control panel cover (acts as blank cover).	Yes	49.99
53	CCHPS_CC_053a (3.5-5.5kw) Compressor Heater	Yes	£25.99



50HS-A SPARE PARTS

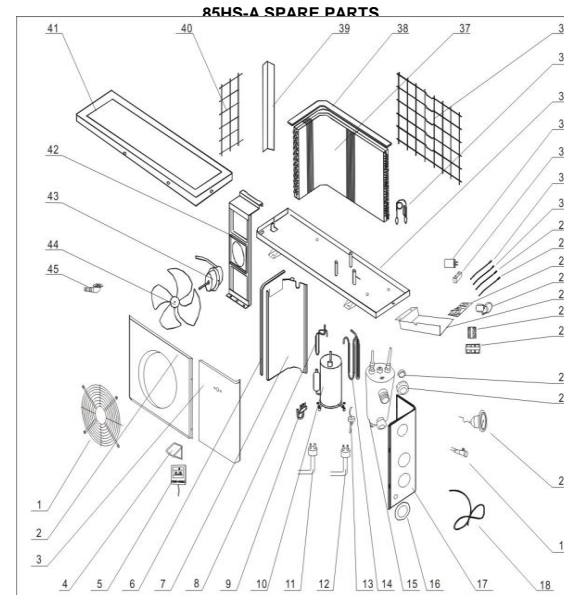
No.	UNIT MODEL	In Stock	RRP
1	Fan protection net	No	10.40
2	Front panel 1	No	15.60
3	Front panel 2	No	15.60
4	Control panel cover	Yes	15.00
5	Wire controller	Yes	49.00
6	Verge board polyfoam	No	2.60
7	Verge board	No	7.80
8	Exhaust pipe	Yes	7.80
9	Four way valve	Yes	24.99
10	Compressor	Yes	249.60
11	High pressure interruptor	Yes	7.99
12	Low pressure interruptor	Yes	7.99
13	Water flow switch	Yes	15.00
14	Gas return pipe	Yes	10.40
15	Titanium heat exchanger	Yes	241.80
16	Rubber water fender	Yes	2.99
17	Right size board	No	13.00
18	Power cord	No	7.80
19	Refrigerant charge valve	Yes	7.99
20	Pressure manometer	Yes	24.99
21	Fast connection	Yes	5.99
22	Gasket	Yes	2.99
23	Terminal	Yes	2.60
24	Public terminal	Yes	2.60
25	Electrical box	Yes	2.60
26	Transformer	Yes	7.99
27	Circuit Board	Yes	75.00
28	Copper sensor	Yes	5.99
29	Water sensor	Yes	5.99
30	Ambient sensor	Yes	5.99
31	Compressor sensor	Yes	5.99
32	Motor capacitor	Yes	2.99
33	Compressor capacitor	Yes	12.00
34	Frame	No	20.80
35	Capillary	Yes	5.20
36	Reat net	No	5.20
37	Condenser	No	98.80
38	Condenser top polyfoam	No	2.60
39	Left carriage	No	7.80
40	Left net	No	7.80
41	Top cover	No	13.00
42	Motor bracket	No	13.00
43	Fan motor	Yes	31.20
44	Fan	Yes	29.99
45	Drain tube	Yes	2.99



50	Anti-Vibrating Studs (set of 4)	Yes	19.95
51	Wire Controller extention cable (5m) requires added Control panel cover (acts as blank cover).	Yes	12.99
52	Wire Controller extention cable (50m) requires added Control panel cover (acts as blank cover).	Yes	49.99
53	CCHPS_CC_053a (3.5-5.5kw) Compressor Heater	Yes	£25.99

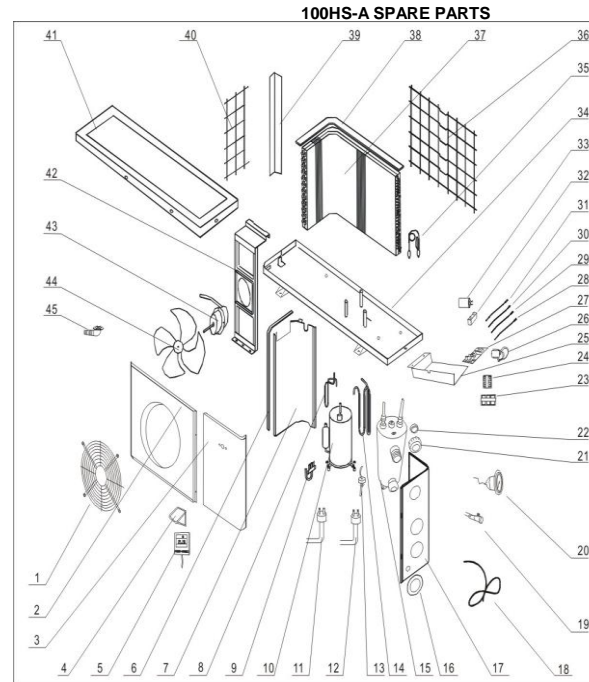
No.	UNIT MODEL	In Stock	RRP
1	Fan protection net	No	£10.40
2	Front panel 1	No	£15.60
3	Front panel 2	No	£15.60
4	Control panel cover	Yes	15.00
5	Wire controller	Yes	49.00
6	Verge board polyfoam	No	£2.60
7	Verge board	No	£7.80
8	Exhaust pipe	Yes	£10.40
9	Four way valve	Yes	£31.20
10	Compressor	Yes	£335.40
11	High pressure interruptor	Yes	7.99
12	Low pressure interruptor	Yes	7.99
13	Water flow switch	Yes	15.00
14	Gas retuning pipe	Yes	£13.00
15	Titanium heat exchanger	Yes	£340.60
16	Rrubber water fender	Yes	2.99
17	Right size board	No	£13.00
18	Power cord	No	£7.80
19	Refrigerant charge valve	Yes	7.99
20	Pressure manometer	Yes	24.99
21	Fast connection	Yes	5.99
22	Gasket	Yes	2.99
23	Terminal	Yes	£2.60
24	Public terminal	Yes	£2.60
25	Electrical box	Yes	£2.60
26	Transformer	Yes	7.99
27	Circuit Board	Yes	75.00
28	Copper sensor	Yes	5.99
29	Water sensor	Yes	5.99
30	Ambient sensor	Yes	5.99
31	Compressor sensor	Yes	5.99
32	Motor capacitor	Yes	2.99
33	Compressor capacitor	Yes	12.00
34	Frame	No	£20.80
35	Capillary	Yes	£7.80
36	Reat net	No	£5.20
37	Condenser	No	£189.80
38	Condenser top polyfoam	No	£5.20
39	Left carriage	No	£7.80
40	Left net	No	£7.80
41	Top cover	No	£13.00
42	Motor bracket	No	£13.00
43	Fan motor	Yes	£39.00
44	Fan	Yes	£29.99
45	Drain tube	Yes	£2.99

50	Anti-Vibrating Studs (set of 4)	Yes	£19.95
51	Wire Controller extention cable (5m) requires added Control panel cover (acts as blank cover).	Yes	£12.99
52	Wire Controller extention cable (50m) requires added Control panel cover (acts as blank cover).	Yes	£49.99
53	CCHPS_CC_053c (8.5kw) Compressor Heater	Yes	£34.99

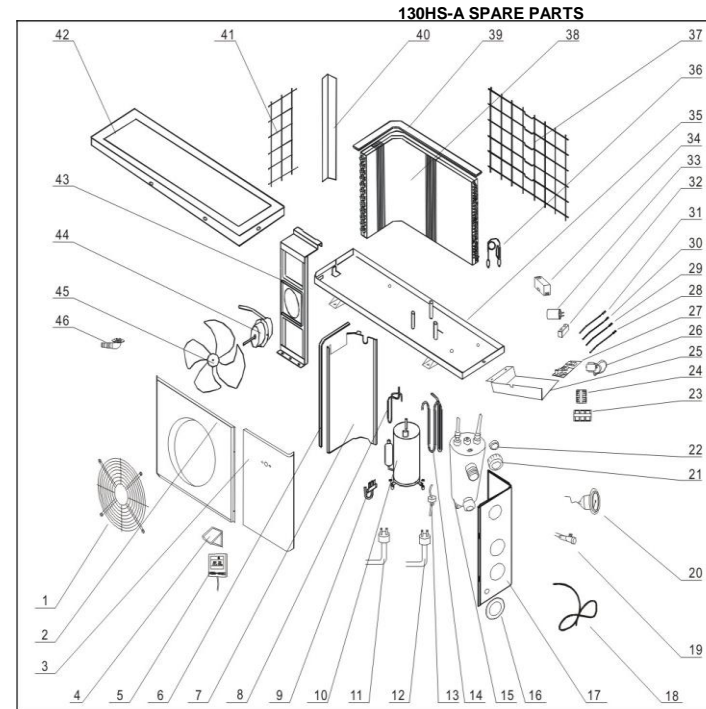


No.	UNIT MODEL	In Stock	RRP
1	Fan protection net	No	£10.00
2	Front panel 1	No	£14.00
3	Front panel 2	No	£14.00
4	Control panel cover	Yes	£10.00
5	Wire controller	Yes	£30.00
6	Verge board polyfoam	No	£2.00
7	Verge board	No	£8.00
8	Exhaust pipe	Yes	£10.00
9	Four way valve	Yes	£24.00
10	Compressor	Yes	£336.00
11	High pressure interruptor	Yes	£6.00
12	Low pressure interruptor	Yes	£6.00
13	Water flow switch	Yes	£10.00
14	Gas retuning pipe	Yes	£12.00
15	Titanium heat exchanger	Yes	£300.00
16	Rrubber water fender	Yes	£2.00
17	Right size board	No	£12.00
18	Power cord	No	£8.00
19	Refrigerant charge valve	Yes	£6.00
20	Pressure manometer	Yes	£16.00
21	Fast connection	Yes	£4.00
22	Gasket	Yes	£2.00
23	Terminal	Yes	£2.00
24	Public terminal	Yes	£2.00
25	Electrical box	Yes	£2.00
26	Transformer	Yes	£6.00
27	Circuit Board	Yes	£50.00
28	Copper sensor	Yes	£4.00
29	Water sensor	Yes	£4.00
30	Ambient sensor	Yes	£4.00
31	Compressor sensor	Yes	£4.00
32	Motor capacitor	Yes	£4.00
33	Compressor capacitor	Yes	£12.00
34	Frame	No	£20.00
35	Capillary	Yes	£8.00
36	Reat net	No	£6.00
37	Condenser	No	£160.00
38	Condenser top polyfoam	No	£4.00
39	Left carriage	No	£8.00
40	Left net	No	£8.00
41	Top cover	No	£12.00
42	Motor bracket	No	£14.00
43	Fan motor	Yes	£44.00
44	Fan	Yes	£34.99
45	Drain tube	Yes	£2.00

50	Anti-Vibrating Studs (set of 4)	Yes	£19.95
51	Wire Controller extention cable (5m) requires added Control panel cover (acts as blank cover).	Yes	£12.99
52	Wire Controller extention cable (50m) requires added Control panel cover (acts as blank cover).	Yes	£49.99
53	CCHPS_CC_053d (10.5kw) Compressor Heater	Yes	£42.99

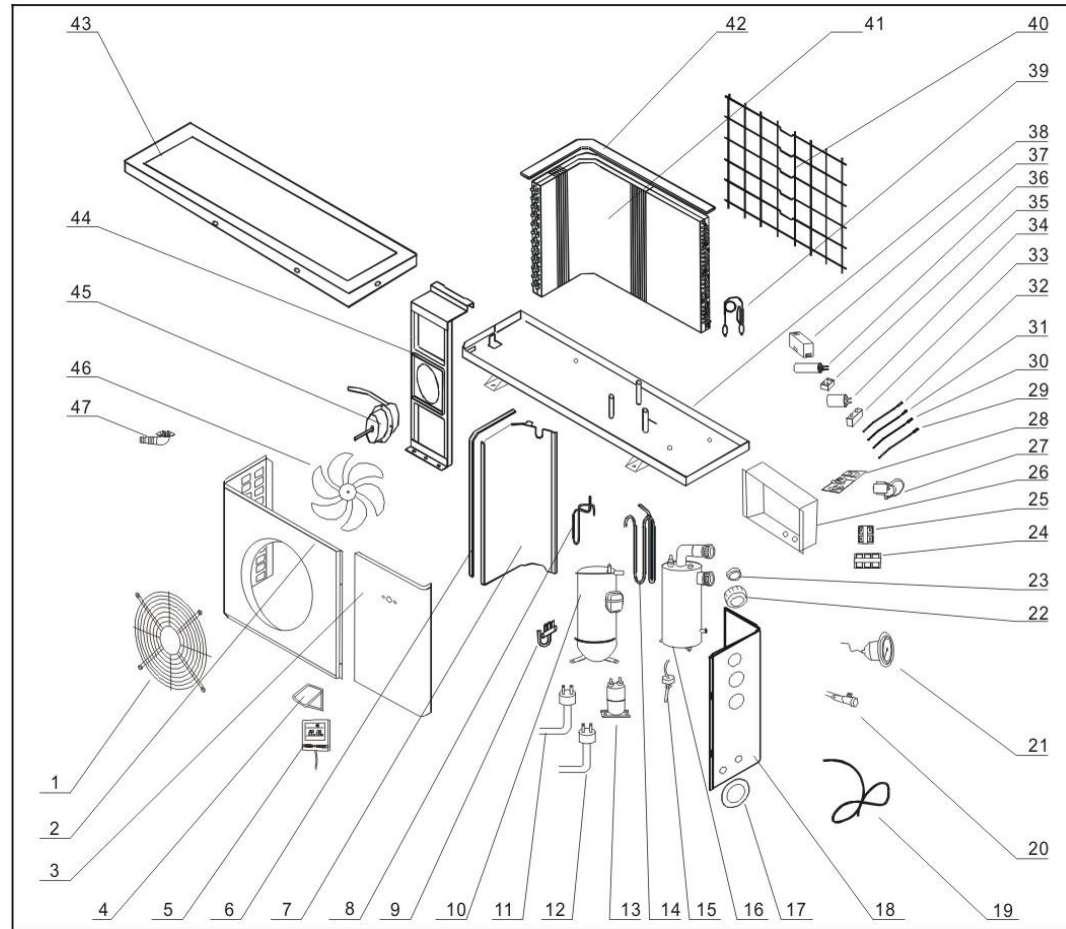


No.	UNIT MODEL	In Stock	RRP
1	Fan protection net	No	£13.00
2	Front panel 1	No	£20.80
3	Front panel 2	No	£20.80
4	Control panel cover	Yes	15.00
5	Wire controller	Yes	49.00
6	Verge board polyfoam	No	£2.60
7	Verge board	No	£13.00
8	Exhaust pipe	Yes	£15.60
9	Four way valve	Yes	£31.20
10	Compressor	Yes	£494.00
11	High pressure interruptor	Yes	7.99
12	Low pressure interruptor	Yes	7.99
13	Water flow switch	Yes	15.00
14	Gas retuning pipe	Yes	£15.60
15	Titanium heat exchanger	Yes	£520.00
16	Rrubber water fender	Yes	2.99
17	Right size board	No	£18.20
18	Power cord	No	£10.40
19	Refrigerant charge valve	Yes	7.99
20	Pressure manometer	Yes	24.99
21	Fast connection	Yes	5.99
22	Gasket	Yes	2.99
23	Terminal	Yes	£2.60
24	Public terminal	Yes	£2.60
25	Electrical box	Yes	£5.20
26	Transformer	Yes	7.99
27	Circuit Board	Yes	75.00
28	Copper sensor	Yes	5.99
29	Water sensor	Yes	5.99
30	Ambient sensor	Yes	5.99
31	Compressor sensor	Yes	5.99
32	Motor capacitor	Yes	2.99
33	Compressor capacitor	Yes	12.00
34	AC Contactor	Yes	£26.00
35	Frame	No	£31.20
36	Capillary	Yes	£10.40
37	Reat net	No	£10.40
38	Condenser	No	£260.00
39	Condenser top polyfoam	No	£5.20
40	Left carriage	No	£13.00
41	Left net	No	£13.00
42	Top cover	No	£20.80
43	Motor bracket	No	£23.40
44	Fan motor	Yes	£57.20
45	Fan	Yes	£39.99
46	Drain tube	Yes	£2.99
50	Anti-Vibrating Studs (set of 4)	Yes	19.95
51	Wire Controller extention cable (5m) requires added Control panel cover (acts as blank cover).	Yes	12.99
52	Wire Controller extention cable (50m) requires added Control panel cover (acts as blank cover).	Yes	49.99
53	CCHPS_CC_053e (13kw) Compressor Heater	Yes	£54.99



160HS.A SPARE PARTS

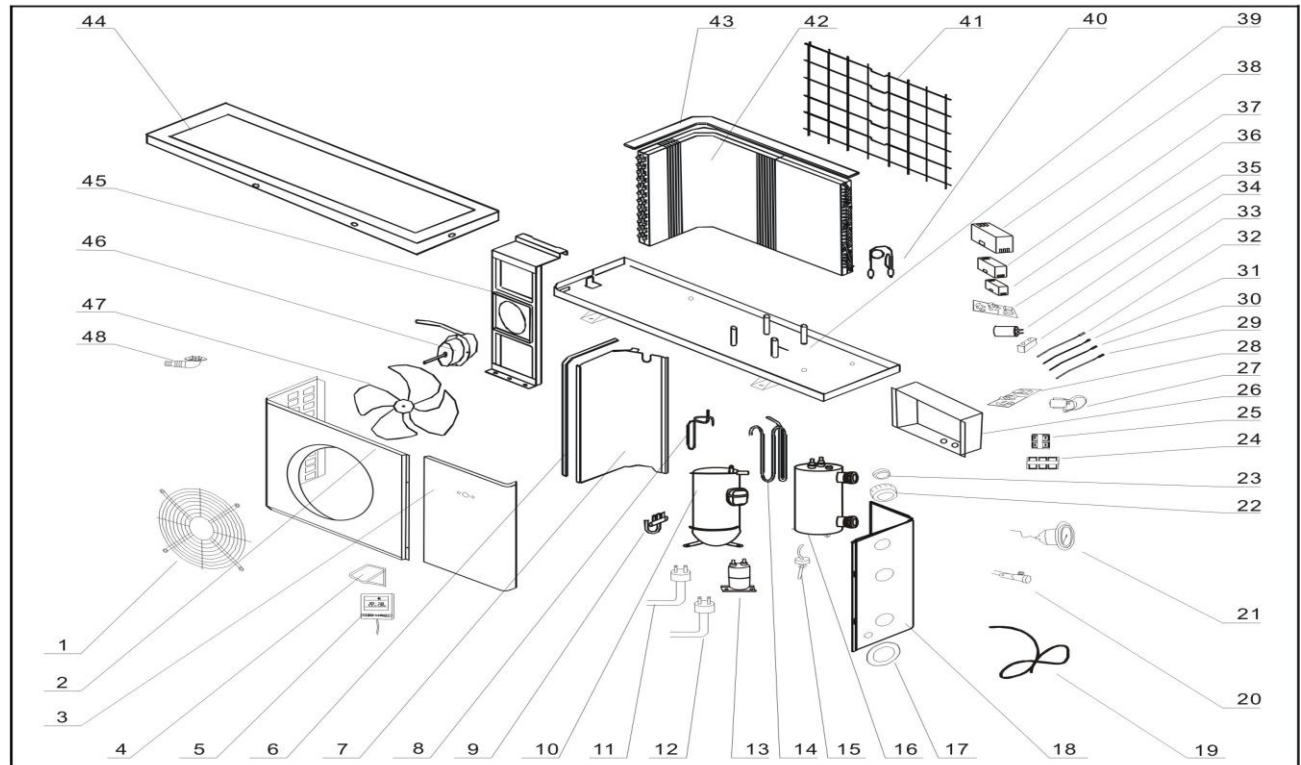
No.	UNIT MODEL	In Stock	RRP
1	Fan protection net	No	£18.20
2	Front panel (left)	No	£52.00
3	Front panel (right)	No	£23.40
4	Control panel cover	Yes	15.00
5	Wire controller	Yes	49.00
6	Verge board polyfoam	No	£5.20
7	Verge board	No	£18.20
8	Exhaust pipe	Yes	£31.20
9	Four way valve	Yes	£46.80
10	Compressor	Yes	£728.00
11	High pressure interruptor	Yes	£7.99
12	Low pressure interruptor	Yes	£7.99
13	Oil tank	Yes	£28.60
14	Gas retuning pipe	Yes	£31.20
15	Water flow switch	Yes	£15.00
16	Titanium heat exchanger	Yes	£676.00
17	Rubber water fender	Yes	2.99
18	Right size board	No	£39.00
19	Power cord	No	£18.20
20	Refrigerant charge valve	Yes	7.99
21	Pressure manometer	Yes	24.99
22	Fast connection	Yes	5.99
23	Gasket	Yes	2.99
24	Terminal	Yes	£2.60
25	Public terminal	Yes	£2.60
26	Electrical box	Yes	£13.00
27	Transformer	Yes	7.99
28	Circuit Board	Yes	75.00
29	Copper sensor	Yes	5.99
30	Water sensor	Yes	5.99
31	Ambient sensor	Yes	5.99
32	Compressor sensor	Yes	5.99
33	Motor capacitor	Yes	2.99
34	Compressor capacitor	Yes	12.00
35	start relay	Yes	£52.00
36	start capacitor	Yes	£26.00
37	AC Contactor	Yes	£31.20
38	Frame	No	£46.80
39	Capillary	Yes	£15.60
40	Reat net	No	£15.60
41	Condenser	No	£364.00
42	Condenser top polyfoam	No	£5.20
43	Top cover	No	£31.20
44	Motor bracket	No	£28.60
45	Fan motor	Yes	£78.00
46	Fan	Yes	£39.99
47	Drain tube	Yes	£2.99



50	Anti-Vibrating Studs (set of 4)	Yes	19.95
51	Wire Controller extension cable (5m) requires added Control panel cover (acts as blank cover).	Yes	12.99
52	Wire Controller extension cable (50m) requires added Control panel cover (acts as blank cover).	Yes	49.99
53	CCHPS_CC_053f (17.5kw) Compressor Heater	Yes	£72.99

BP-210HS-A SPARE PARTS

No.	UNIT MODEL	In Stock	RRP
1	Fan protection net	No	£26.00
2	Front panel (left)	No	£65.00
3	Front panel (right)	No	£33.80
4	Control panel cover	Yes	£15.00
5	Wire controller	Yes	£49.00
6	Verge board polyfoam	No	£7.80
7	Verge board	No	£26.00
8	Exhaust pipe	Yes	£39.00
9	Four way valve	Yes	£46.80
10	Compressor	Yes	£806.00
11	High pressure interruptor	Yes	£7.99
12	Low pressure interruptor	Yes	£7.99
13	Oil tank	Yes	£28.80
14	Gas retuning pipe	Yes	£39.00
15	Water flow switch	Yes	£15.00
16	Titanium heat exchanger	Yes	£806.00
17	Rubber water fender	Yes	£2.99
18	Right size board	No	£52.00
19	Power cord	No	£23.40
20	Refrigerant charge valve	Yes	£7.99
21	Pressure manometer	Yes	£24.99
22	Fast connection	Yes	£5.99
23	Gasket	Yes	£2.99
24	Terminal	Yes	£5.20
25	Public terminal	Yes	£2.60
26	Electrical box	No	£18.20
27	Transformer	Yes	£7.99
28	Circuit Board	Yes	£75.00
29	Copper sensor	Yes	£5.99
30	Water sensor	Yes	£5.99
31	Ambient sensor	Yes	£5.99
32	Compressor sensor	Yes	£5.99
33	Motor capacitor	Yes	£2.99
34	Start capacitor	Yes	£12.00
35	Soft start board	Yes	£91.00
36	AC Contactor 1	Yes	£20.80
37	AC Contactor 2	Yes	£26.00
38	AC Contactor 3	Yes	£91.00
39	Frame	No	£57.20
40	Capillary	Yes	£18.20
41	Reat net	No	£20.80
42	Condenser	No	£468.00
43	Condenser top polyfoam	No	£7.80
44	Top cover	No	£39.00
45	Motor bracket	No	£36.40
46	Fan motor	Yes	£104.00
47	Fan	Yes	£49.99
48	Drain tube	Yes	£2.99



50	Anti-Vibrating Studs (set of 4)	Yes	£19.95
51	Wire Controller extention cable (5m) requires added Control panel cover (acts as blank cover).	Yes	£12.99
52	Wire Controller extention cable (50m) requires added Control panel cover (acts as blank cover).	Yes	£49.99
53	HPS_CC_053g (21kw) SANYO/COPELAND Compressor He	Yes	£72.99