

AQUAMATIC POOL COVER SYSTEMS



Worldwide Leaders



Information

Track type - Concrete Inwall
Colour - Dark Green

Reason for buying Aquamatic

The aquamatic cover is driven by hydraulic fluid not electricity. On the surface, most pool covers look similar but the most important part of any pool cover is the drive mechanism. Our patented design will guarantee you trouble free maintenance and increased power performance - see page 12.

‘Only with Aquamatic’

Why buy the best?

All pools in this country need to have some kind of a cover, mainly for heat retention purposes, preventing water evaporation, chemical loss and to keep debris out of the pool.

Traditionally a Solar Blanket and a Winter Debris cover are used, both requiring manual effort to put on or take off but with Aquamatic all you need is the turn of a key.

An Aquamatic cover also gives you the added safety benefit that nothing can enter the pool unless you turn the key,

a welcome thought to parents and pet owners especially.

Not all automatic swimming pool covers are built to the same standards. Aquamatic have dedicated years of investment to give you the ultimate system at an affordable price.

This brochure will explain all the reasons why you should make the right choice and join over 30,000 others worldwide in owning the very best automatic pool cover system that money can buy.

the best is affordable



Information

Track type - Concrete inwall

Colour - Royal blue



Covers

Outdoor Pools	6
Indoor Pools	9
Infinity Edge, Shaped & Commercial Pools	11

Detail

Colours	13
Housing & Track Options	14
Pit Covers	17



Reason for buying Aquamatic

One of the most reliable and quickest covers on the market and with a 20 year limited warranty on the drive mechanism, you can see why Aquamatic is the popular choice.

‘Only with Aquamatic’

Information

Track type - Concrete Inwall
Colour - Dark Grey

Outdoor Pools

No other pool cover gives you more options than Aquamatic. Whatever the size or shape of your outdoor pool, we can provide you with a safety cover system that will suit both your style and budget.

Shown here are some examples of how adaptable and diverse our covers are. If you have an outdoor pool we have the cover for you.

There are lots of options to consider when choosing your cover system. What sort of tracking do you require, should you have above or below housing and of course what colours are available to you. In order to help you decide we have listed these items on the example images so as to assist you visualise each system. All the information you require to help you decide what's best for your pool is listed in the 'Detail' section of this brochure.



Reason for buying Aquamatic

Every outdoor Aquamatic cover has a built in rain water removal system.

'Only with Aquamatic'

Information

Track type - Concrete Inwall
Colour - Navy Blue

Information

Track type - Concrete Inwall

Colour - Royal Blue

Reason for buying Aquamatic

A cover that will turn your pool into a large passive solar collector and will help raise the pool water temperature.

Any domestic size or shaped pool can be covered.

‘Only with Aquamatic’

Reason for buying Aquamatic

No electrics are required near the pool. The powerpack (an electrically driven hydraulic pump) can be placed in a remote area up to 25m away.

'Only with Aquamatic'

Information

Track type - Concrete Inwall
Colour - Royal Blue



Compact drive systems available for indoor pools



Deck level pools catered for

Indoor Pools

Any type of pool construction that is built indoors has humidity, condensation and safety issues. Without question, an Aquamatic safety cover system installed on an indoor swimming pool instantaneously prevents these problems arising when the pool is not in use.

Applying an Aquamatic cover on an indoor pool is like placing a lid on the pool, it completely seals the swimming pool. Cutting down on humidity and condensation levels substantially reduce running costs.

If you are considering purchasing a 'Slatted' type cover, please bear in mind that this type of cover is NOT classed or been approved as a safety cover. In addition, approximately 20% evaporation loss occurs in a slatted system due to the gaps that are formed at each joint!

Look in the 'Detail' section for more information.

Information

Deck Level Pool
Track type - Flush
Colour - Stone



Reason for buying Aquamatic

Pressure relief valves ensure that the cover stops on meeting any obstruction when closing the pool.

'Only with Aquamatic'

Reason for buying Aquamatic

An ingenious trouble free patented slider system combined with a compensator ensures that the cover closes squarely every time.

Information

Infinity Pool
Track type - Concrete Inwall
Colour - Royal Blue



Infinity, Shaped & Commercial Pools

Aquamatic have a system to suit every pool. Whether you have a private or commercial, shaped or fabulous infinity style swimming pool we have it covered.

Look in the 'Detail' section for more information.



Information

Commercial Pool
Track type - Top
Colour - Dark Grey

Reason for buying Aquamatic

Aquamatic is the most versatile cover, enabling you to house the cover either above or below ground with a combination of three different types of track; flush, surface and inwall track.

'Only with Aquamatic'

How our covers work

A PVC reinforced fabric is attached to an aluminium leading edge bar that spans the width of the pool. A unique 'Slider' mechanism is attached to the leading edge and this slides through aluminium tracking placed either side of the pool.

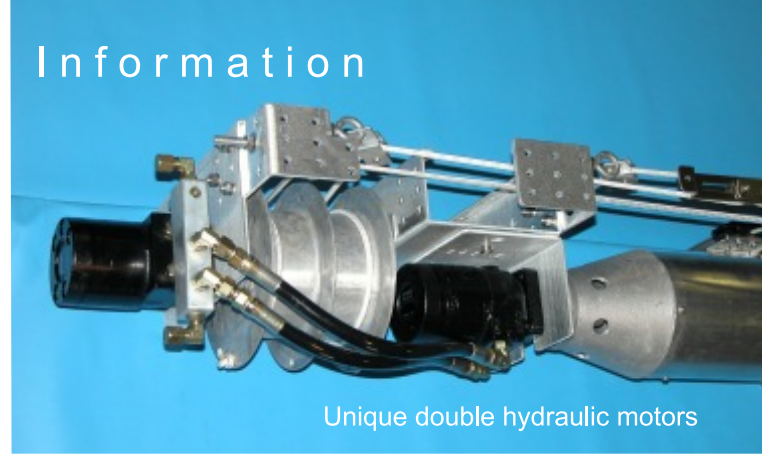


A marine quality nylon cable cord is also attached to the fabric and threads up and down the tracks onto a 'Drive Mechanism', which activates a pair of cast aluminium reels. The Drive Mechanism is operated by a key operated switch. The cast aluminium reels wind up the nylon cables which pulls the fabric through the tracking to close the cover.

To remove the cover the Drive Mechanism simply activates the 'Roller Tube', this winds up the fabric on to the tube just like a conventional reel system used for Solar Covers.

'Two hydraulic motors'

'Only with Aquamatic'



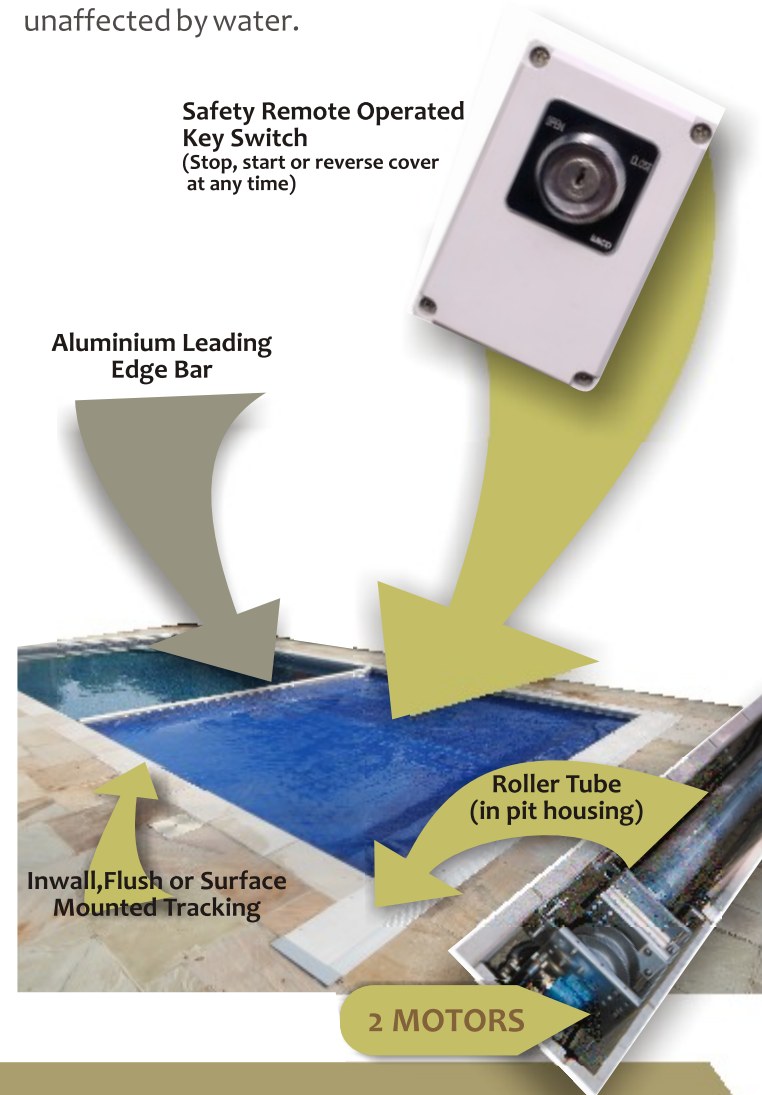
Unique double hydraulic motors

What 'Powers' it?

A 'Powerpack' hydraulic pump that pumps hydraulic oil through two 9mm hoses which are connected to **TWO** hydraulic motors via a reverse flow manifold.

Each motor independently activates either the 'Reel System' or the 'Roller Tube' and because there are no clutches involved a smooth and reliable service is delivered time after time!

There is no electrical supply required to power the drive mechanism. Therefore, in the event that the pit housing is flooded, there will be no costly repair bills as all the components in the pit area are unaffected by water.



Safety Remote Operated Key Switch (Stop, start or reverse cover at any time)

Aluminium Leading Edge Bar

Roller Tube (in pit housing)

Inwall, Flush or Surface Mounted Tracking

2 MOTORS

Choosing your cover

7 Standard Fabric Colours

Colours depicted are 90% accurate; they are as close as the printing process allows. Samples are available on request.

5032 - Navy Blue

5001 - Royal Blue

5029 - Light Blue

6001 - Dark Green

1003 - Stone

7024 - Dark Grey

7193 - Light Grey

Other colours available, subject to surcharge

All our cover fabrics are manufactured and assembled under license by Aquaflex Ltd. Having the cover material cut and prepared in the UK has the added benefit of a quicker manufacturing time and reduced costs. A cover can be made and dispatched in 24 hours!

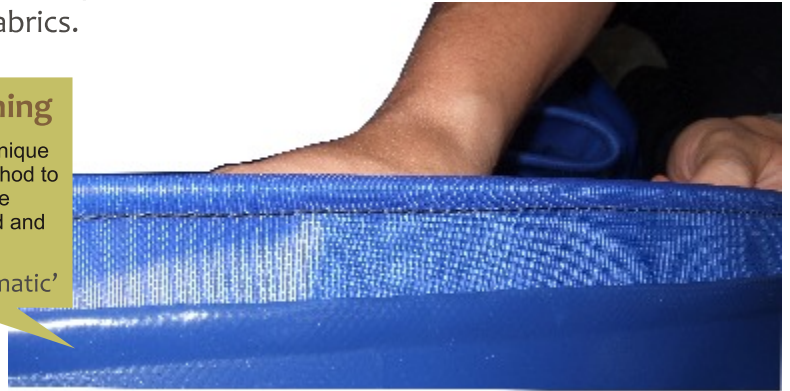
7 year fabric warranty

The cover fabric used for all UK installations is a (BS3424/5A) 630g/m² flexible plasticised PVC material. The fabric has a high gloss lacquer on both sides and contains a high tensile polyester scrim reinforcing layer to enhance tear strength. This lacquered finish will also enable the fabric to be **cleaned far easier** compared to other non-lacquered fabrics.

Hidden Stitching

Aquamatic uses a unique overlap welding method to ensure the underside stitching is protected and not visible

'Only with Aquamatic'



Life Expectancy & Chemicals

Aquamatic fabric material has a life expectancy of approximately 7-10 years and all have a seven year pro-rated warranty. Apart from UV and wear & tear, **the most common cause for a reduced fabric life span is the incorrect use of pool chemicals i.e. continuation of high chlorine levels or 'Shock Chlorine Treatments'**. Having an Aquamatic cover **substantially reduces the amount of chemical** required to sanitise the pool water as approximately two thirds of all organic matter is prevented from entering the pool. The cover also restricts up to 90% of light from entering the pool thus preventing algae from growing!

Normal chlorine levels required with an Aquamatic cover can be reduced to 1ppm. If a 'shock treatment' is required, we recommend that a 'Non-Chlorine Shock Treatment' (Sodium Monopersulphate) is used.

All Aquamatic covers can withstand temperatures from -30/+70°C

An Aquamatic Cover is not Crease Free!

It is impossible for the fabric material that covers the pool to be crease free. The cover material is manufactured to the exact width of the track to track measurement plus, another 100 - 125mm of excess material. The excess material is to allow the cover to sit correctly on the water surface. Therefore, when applying a cover to the roller tube (the same width as the track to track dimension) a number of folds have to be made, this results in creases forming in the cover at the pit/surface housing end. The amount and length of creases differ on every Aquamatic installation, this is dependant on size, shape etc.

What type of installation would best suit you?

The Aquamatic Safety Cover can be applied to any domestic pool size or shape. By offering a choice of above or below the surface mounting it offers you either a cover which disappears into a surface mounted cabinet with no disruption to existing paving; or, by making a pit construction, allows for the cover to be stored below deck level.

Above Ground Installation

An above Ground Installation is ideal for situations where the surrounding deck area, e.g. paving, is not to be disturbed and saves on the inconvenience and added expense of not having to build a below ground pit housing.

The cover can be retracted into either a flush or surface mounted tracking into an above ground housing that is fixed to the surface of the surrounding deck area (a good solid base is required).

Polymer Housing

A **Polymer** housing cabinet is available from Aquamatic to house the cover system. The housing is manufactured using 100% virgin, high impact, Polystyrene Resin which is available in six different colours. Polymer cabinets are very durable, light weight, and require no maintenance. They are also very easy to construct and can take the weight of several people. (not to be used as a diving platform)

Polymer Colour Options

Off White	Brown
Charcoal Grey	Terracotta
Light Grey	Buff

Polymer colours depicted are 90% accurate, they are as close as the printing process allows. Samples are available on request.

Timber

Alternatively, the cabinet housing can be made out of a **timber** construction by a skilled tradesman (special bench support brackets can be provided for this purpose).



Below Ground

Suitable for: New or Existing Pools.
Track Options: Top or Flush Track

The cover is retracted through either flush or surface mounted tracking into a storage pit, below deck level. Pit Construction (13"/330mm wide) is made either by using concrete blocks or a polymer shell, no RSJ lintel is required. A polymer, synthetic wood or in-fill lid is supplied as standard.

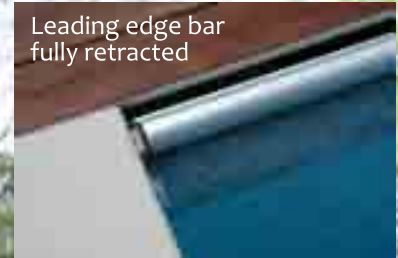
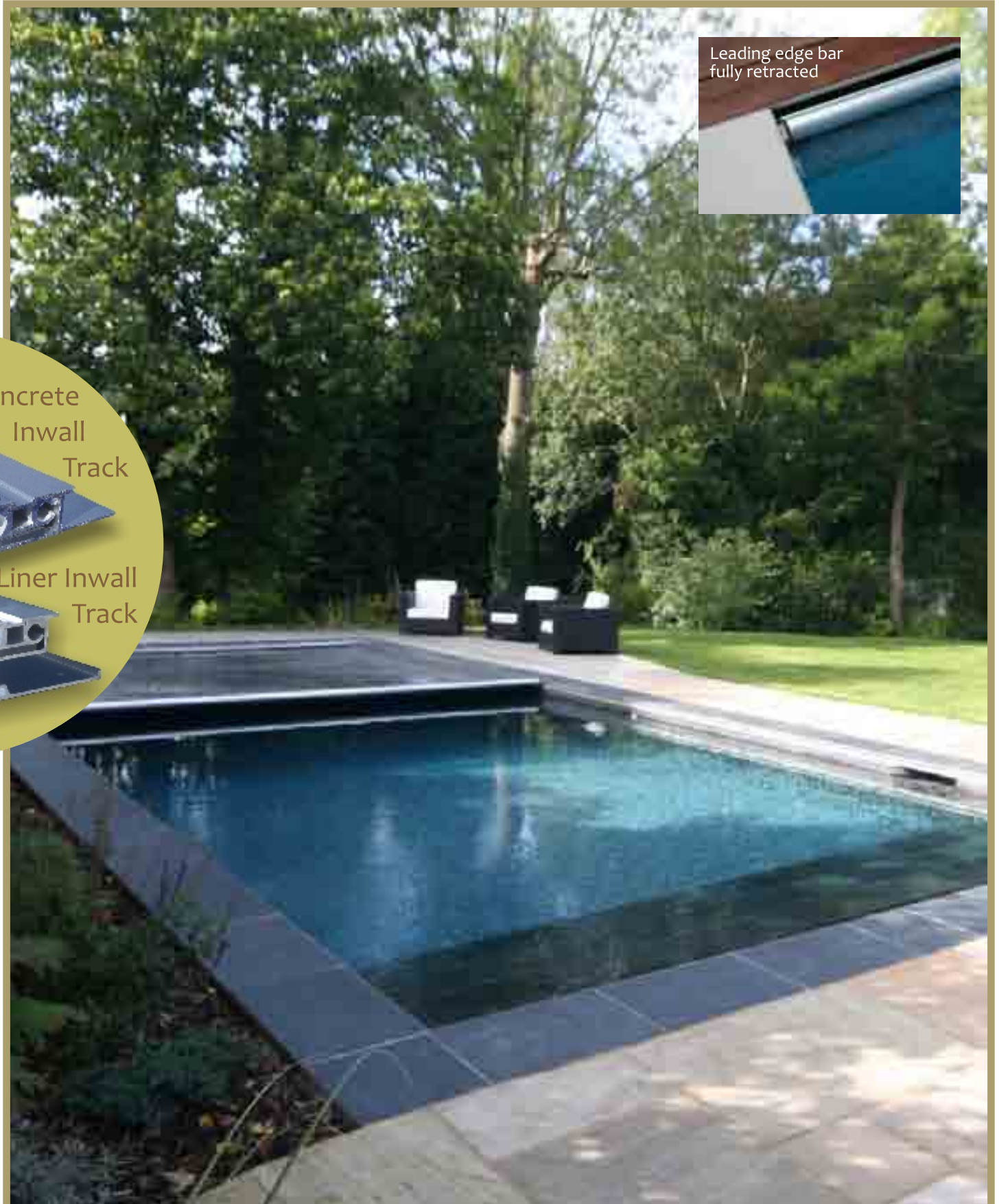


Flush Track

Below Ground Inwall Tracking

Suitable for: New Concrete or Liner Pools.
Pools must be rectangular in shape Pool steps must be built internally

Inwall tracking enables you to conceal the tracking extrusion within the parameters of the pool wall. The cover is retracted through the inwall tracks and enters the pit housing over the pool wall structure, not the coping edge. With this method of installation, the Leading Edge Bar is also less obtrusive, as the bar comes to rest against the pit housing lid.



Information

Flush Track Lid Housing



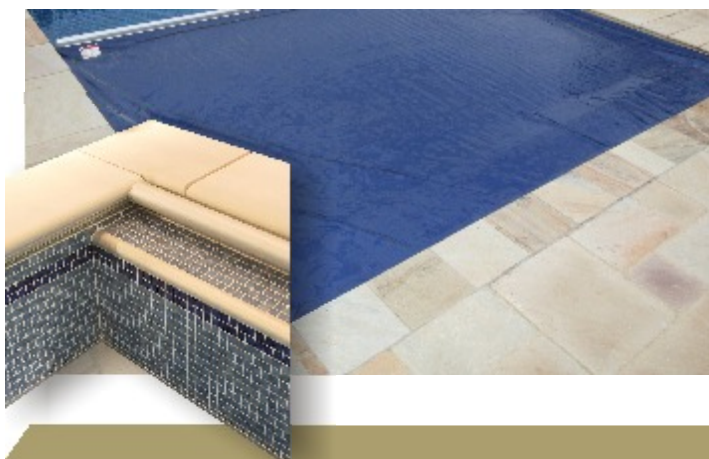
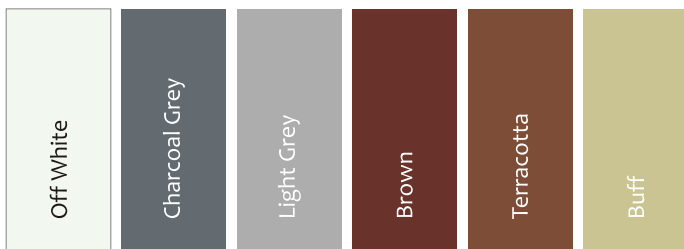
Looks and feels like real wood!

Also available as a bench model

Polymer Cover Option

Suitable for: Flush, Top or Inwall Tracking

Polymer lids are manufactured from 100% virgin, high impact, Polystyrene Resin. They are hard wearing, unaffected by poolwater chemicals and UV resistant.



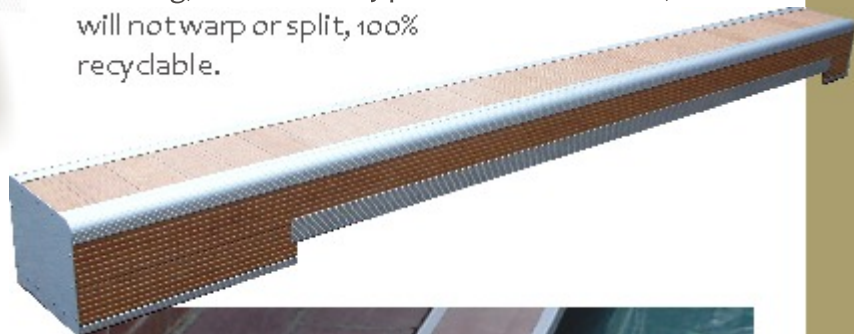
Pit Covers

There are a number of lid options available to cover the pit housing. The pool surround will ultimately have an influence on what type of lid will be appropriate. Our standard lids consist of three options either Synthetic Wood, Polymer or a Stone finish and designed for light foot traffic only. All lids are maintenance free.

Synthetic Wood Decking

Suitable for: Flush, Top or Inwall Tracking

Manufactured from structural polymer the synthetic wood housing lid is an ideal alternative to using natural wood finishes. UV stabilised (resists fading for 10 years+), non slip, extremely hard wearing, unaffected by poolwater chemicals, will not warp or split, 100% recyclable.



Stone Cover Option

Suitable for: Inwall or Flush Tracking

Stainless steel pans are available to enable you to use the surrounding deck materials. Dependant on the type of tracking that is used will effect the depth of stone finish. Your dealer will be able to advise the best options.

The 'ultimate' in Below Ground



Uniquely Engineered

The Lift Lid system is uniquely engineered to hide the lowered bond beam, as well as the leading edge bar of the cover. It rests solidly on the lowered bond beam providing a completely stable, zero deflection walking surface that incorporates your pool coping or decking surround. The cover vinyl is sandwiched between two nylon rails which also act as a water stop and blocks virtually all pool water from splashing into the cover recess.

Ask your dealer for details.

Why you need Aquamatic

Dual Hydraulic Motors

***EXCLUSIVE**



Beware of other cover systems claiming to have a hydraulic system, many of them use only one motor incorporating a clutch/gear system that is prone to maintenance problems and lower torque performance

The fundamental difference between Aquamatic and other safety cover systems available on the market today is the drive system. Aquamatic incorporate a 'dual hydraulic drive system' consisting of two independent hydraulic motors, one to close the cover and another to open the cover. Having two independent motors is substantially more powerful and therefore able to cope with the 'drag factor' that is often associated with pools built in the UK. The hydraulic drive system has a 20 year pro-rata warranty.



***EXCLUSIVE**

Travel Limit System



Aquamatic Travel Limit System makes sure your cover stops when it reaches the end of its travel or hits an obstruction.

Standard equipment on the Aquamatic cover is the 'travel Limit System' that incorporates pressure relief valves that will stop the cover when it meets an obstruction or comes to the end of its travel. When the cover touches the end of the pool it must stop. This creates fluid over-pressure causing the fluid to bypass back to a built-in reservoir ceases to drive the hydraulic motors. **This hydraulic system is unique to Aquamatic.**



The Aquamatic screen mesh removes the necessity of a cover pump every time it rains!



Rain Water Removal System

Every outdoor Aquamatic cover has a built-in rain water screen mesh. Having this facility removes the necessity for the use of a cover pump every time it rains! However, if there is an excessive amount of water on the cover, a cover pump is supplied to enable this water to be removed. Throughout the winter period, we advise that a cover pump is used continuously to prevent water build up when the pool is generally not in use.

Built-in Compensator

***EXCLUSIVE**



Make sure your cover closes squarely every time by using Aquamatic's unique built in compensator.

Aquamatic cover systems are **GUARANTEED** to close squarely. Using a unique built-in compensator mechanism, Aquamatic is able to redistribute the fabric material whilst in operation thus guaranteeing to close the cover squarely, every time!

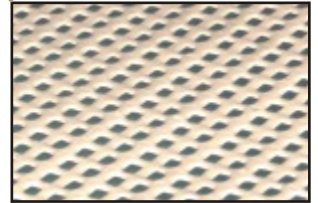
Reinforced Hydraulic Hoses



All hydraulic runs over 25m are automatically converted to reinforced hoses to prevent hydraulic back pressure ensuring a smooth and trouble free operation.

Cover Treatment

***EXCLUSIVE**



'Cover Treatment' is applied to the underside of the fabric material to reduce 'deck drag'. Deck Drag is the result of water or condensation collecting on the underside of the cover material, preventing free movement over hard surface areas such as paving or smooth coping stones when the cover is in operation.



This patent protected system will reduce 'deck drag' and provide a smooth motion over hard surfaces such as paving or smooth coping stones.

Cover treatment is a result of many years experimentation with various types of mesh treatments. Aquamatic have their mesh formulated especially for their own cover system.

Cover treatment can also be applied for free form shaped pools, rectangular pools with step units either on the end or the side of the pool.

Cover Treatment in some instances, can replace the need for installing an air system that is used on a free form shaped pool i.e. large paved areas.

'Only with Aquamatic'

AQUAMATIC POOL COVER SYSTEMS
Worldwide Leaders



How safe is safe?

Aquamatic cannot guarantee that your pool is 100% safe, no cover system can. Although Aquamatic is a proven and tried system, it still relies on the home owner to keep the pool covered when not in use. As any parent knows, having children at whatever age or however well disciplined they are, or as vigilant as you are as a parent, you can never guarantee their safety or prevent an accident from occurring.

Installing the Aquamatic cover will give you an added safety factor and minimise the risk that owning a pool can have in endangering the lives of family and friends. If you decide to purchase a safety cover, please bear in mind that although the Aquamatic Cover System can sustain the weight of many people, it is not a toy. Children or Adults should never be enticed to walk or play on a cover.



controlled demo only

Maintenance

An Aquamatic safety cover, like a car is NOT a maintenance free product. Depending on the location and use of the cover will determine how much maintenance is required. From our experience, every cover installation has it's own individual maintenance requirements. Some cover systems will require an annual service, whilst others, once every three or four years!

Maintaining your pool cover system is generally limited to flushing out the track guides with water and lubricating with Silicone spray on a regular basis.

Wearable parts such as Sliders, Pulley Bearings and End Stop Guides can be changed either by the home owner, dealer or an Aquamatic engineer. As with all things, the greater the care, the longer the life and an Aquamatic cover system is no exception. *Instructions for changing Sliders etc are available from your dealer.

Assembled in the UK



Paramount Pool Products have been importing the Aquamatic cover system into the UK since 1995. Due to the overwhelming demand a commercial decision was taken in 1998 to assemble each cover to order here in the UK. In addition, the fabrics are also manufactured under license here in the UK. Having all the component parts in stock and a fleet of installation crews enable us to offer an expedient and reliable service that we believe is unmatched within the industry.

More Information

To find your nearest Aquamatic dealer or to view our online gallery visit our website

www.paramount-pools.co.uk



Acknowledgements

We would like to thank the following companies who contributed and provided photographs within this publication;

- A&D Pools
- Alan Bettin Pools
- Aquarian Pools
- Aruba Pools
- Asher Pools
- Chiswell Pools
- Fowler Pools
- Florida Pools
- Harlequin Pools
- Home Counties Swimming Pools
- Howards Hydrocare
- Polypool
- Pool People
- Tanby Pools (inc. front cover)